

HEAVY DUTY SKID-STEER BUCKETS



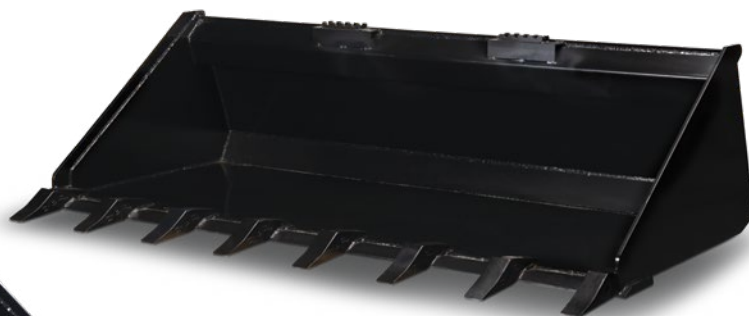
The Star Industry Heavy Duty Skid Steer Bucket is built to last. It's constructed with extra heavy-duty steel, fully-welded seams and reinforced hat section and side blades to strengthen and protect bucket sides. The bucket's bottom is set close to the ground for level 'back dragging' (landscapers love it!).

- ➔ Choose from Standard Heavy Duty Skid Steer Bucket or Extreme Duty XD Bucket with a 25% heavier shell
- ➔ 5 bucket profiles: Low Profile Dirt, Dirt, Utility, Snow & Light Material, Fertilizer and Cotton Seed
- ➔ Available in widths up to 84" wide

AVAILABLE OPTIONS

Punched blade with bolt-on-blade

The reversible 5/8" x 8" bolt-on-blade gives 3 times the wear



Heavy-duty teeth

Features 'pin-on' series 23 teeth that measure 2 1/4" across the point

Side Cutters Optional bolt-on



4101 Garland Drive Fort Worth TX 76117
 Phone | 817-485-6073 Fax | 817-428-6008
 USA & Canada Toll Free 800-541-1797

www.starindustries.com
 Operating Manual and Safety Information available online.

PRODUCT OPTIONS

FEATURES

Strong Hat Section

Provides unyielding strength across the entire top of bucket.

Steel Side Blades

Strengthens and protects bucket sides.

Seams Fully Welded

Continuous weld inside and outside of shell seams provides greater strength and longer life.

Low Profile Design

Operator can see the leading edge from the seat. Other profiles are also available.

Beveled Hard Carbon Steel Punched Blade on Leading Edge

3/4" x 6" depending on bucket width.

Buckets Designed to Fit each brand of loader

Strong Universal Quick-Tach

Constructed of 3/8" plate steel to stand up to the new more powerful skid-steer loaders.

BACK

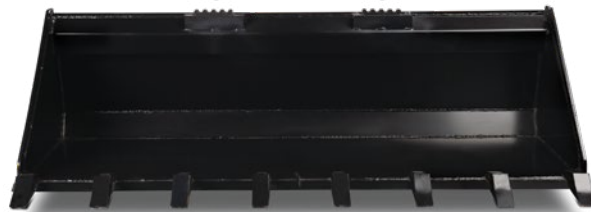


Load Transfer Heavy (1/2" x 3") Scuff Bars

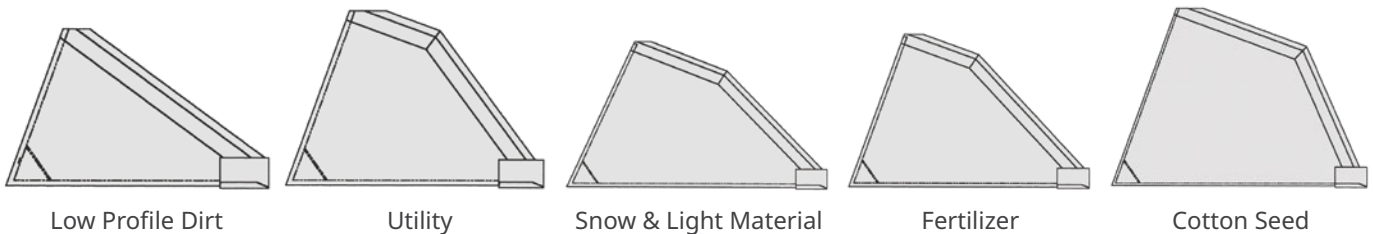
Three to five bars, depending on width, reinforce bucket bottom and protect from excessive wear.

Integrated Safety Step

5-year warranty — Made in USA



OPTIONAL BUCKET PROFILES



Low Profile Dirt

Utility

Snow & Light Material

Fertilizer

Cotton Seed



4101 Garland Drive Fort Worth TX 76117
Phone | 817-485-6073 Fax | 817-428-6008
USA & Canada Toll Free 800-541-1797

www.starindustries.com
Operating Manual and Safety Information available online.

SPECIFICATIONS

LOW PROFILE DIRT SKID-STEER BUCKETS

Model No.	Width ID in	Width OD in	Height OD in	Depth OD in	Capacity Heaped	Weight
LP22A-60	60"	62 ³ / ₈ "	20 ¹ / ₄ "	34"	15.0 cuft.	435 lbs.
LP22A-66	66"	68 ³ / ₈ "	20 ¹ / ₄ "	34"	16.5 cuft.	510 lbs.
LP22A-72	72"	74 ³ / ₈ "	20 ¹ / ₄ "	34"	18.0 cuft.	560 lbs.
LP22A-78	78"	80 ³ / ₈ "	20 ¹ / ₄ "	34"	19.6 cuft.	565 lbs.
LP22A-84	84"	86 ³ / ₈ "	20 ¹ / ₄ "	34"	21.0 cuft.	600 lbs.

LOW PROFILE DIRT SKID-STEER BUCKETS WITH BOLT ON BLADE

Model No.	Width ID in	Width OD in	Height OD in	Depth OD in	Capacity Heaped	Weight
LP22A-60BOB	60"	62 ³ / ₈ "	20 ¹ / ₄ "	34"	15.0 cuft.	516 lbs.
LP22A-66BOB	66"	68 ³ / ₈ "	20 ¹ / ₄ "	34"	16.5 cuft.	600 lbs.
LP22A-72BOB	72"	74 ³ / ₈ "	20 ¹ / ₄ "	34"	18.0 cuft.	658 lbs.
LP22A-78BOB	78"	80 ³ / ₈ "	20 ¹ / ₄ "	34"	19.6 cuft.	673 lbs.
LP22A-84BOB	84"	86 ³ / ₈ "	20 ¹ / ₄ "	34"	21.0 cuft.	715 lbs.

LOW PROFILE DIRT SKID-STEER BUCKETS WITH TEETH

Model No.	Width ID in	Width OD in	Height OD in	Depth OD in	Capacity Heaped	Weight
LP22A-60T	60"	62 ³ / ₈ "	20 ¹ / ₄ "	34"	15.0 cuft.	479 lbs.
LP22A-66T	66"	68 ³ / ₈ "	20 ¹ / ₄ "	34"	16.5 cuft.	560 lbs.
LP22A-72T	72"	74 ³ / ₈ "	20 ¹ / ₄ "	34"	18.0 cuft.	610 lbs.
LP22A-78T	78"	80 ³ / ₈ "	20 ¹ / ₄ "	34"	19.6 cuft.	621 lbs.
LP22A-84T	84"	86 ³ / ₈ "	20 ¹ / ₄ "	34"	21.0 cuft.	662 lbs.



4101 Garland Drive Fort Worth TX 76117
 Phone | 817-485-6073 Fax | 817-428-6008
USA & Canada Toll Free 800-541-1797

www.starindustries.com
 Operating Manual and Safety
 Information available online.